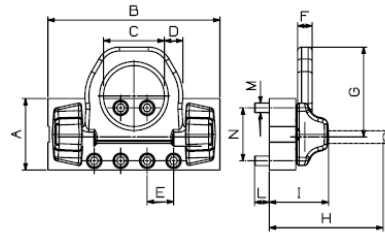


Ringbock schraubbar

WLL 30 t – 50 t



Code	WLL t	A mm	B mm	C mm	D mm	E mm	F mm	G mm	H mm	I mm	L mm	M mm	N mm	Gewicht kg
C825X30	30	180	400	130	42	75	41	194	255	159	80	30	120	61
C825X50	50	270	650	230	70	100	55	339	407	224	100	36	200	202



Code	0° 1-Strang	0° 2-Strang	90° 1-Strang	90° 2-Strang	0-45°	45°-60° 2-Strang	Asimm	0°-45°	45°-60° 3- u. 4-Strang	Asimm
C825X30	30	60	30	60	42	30	30	63	45	30
C825X50	50	100	50	100	70	50	50	105	75	50